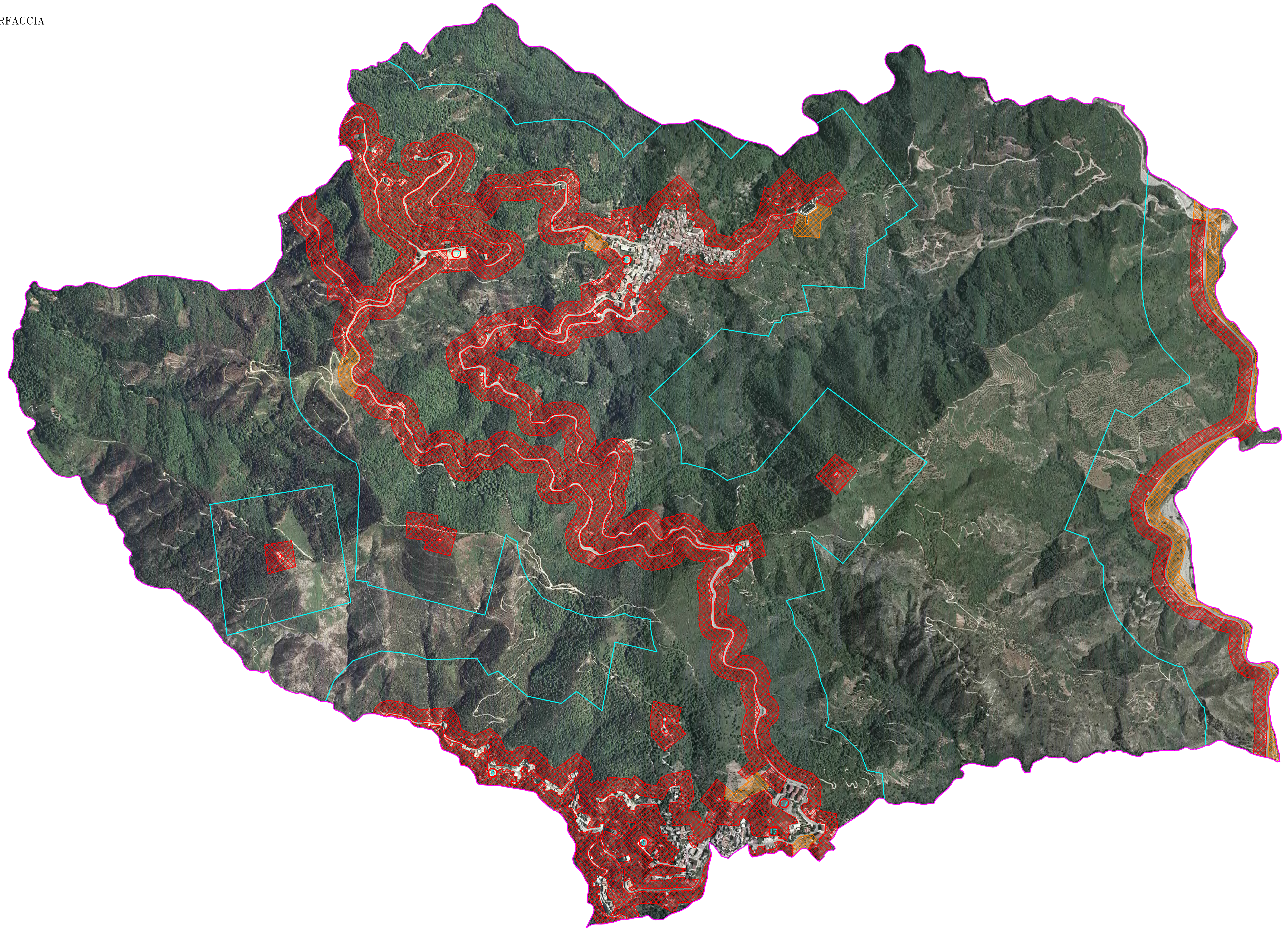







ESPOSTI A RISCHIO INCENDI DI INTERFACCIA

- ⑥ Altri edifici strategici
- ⑬ Edifici di interesse culturale
- ⑰ Impianti Sportivi e luoghi ricreativi



LEGENDA

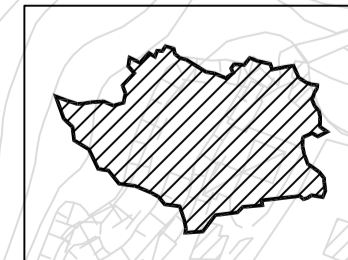
-  Fascia Perimetrale (200 m)
- Classi di rischio incendi di interfaccia
 -  R1
 -  R2
 -  R3
 -  R4

COMUNE DI PENTONE
(PROVINCIA DI CATANZARO)

Piano di Protezione Civile
adeguato alla O.P.C.M. n° 3606 del 28.08.2007

Cartografia delle aree a rischio
incendi di interfaccia

elaborato grafico
scala 1:5.000



5

Tecnici
Ing. Eleni Vavouraki
(Capogruppo)

Ing. Gianpaolo Rosa

Approvazioni

574.0

558.9

572.6